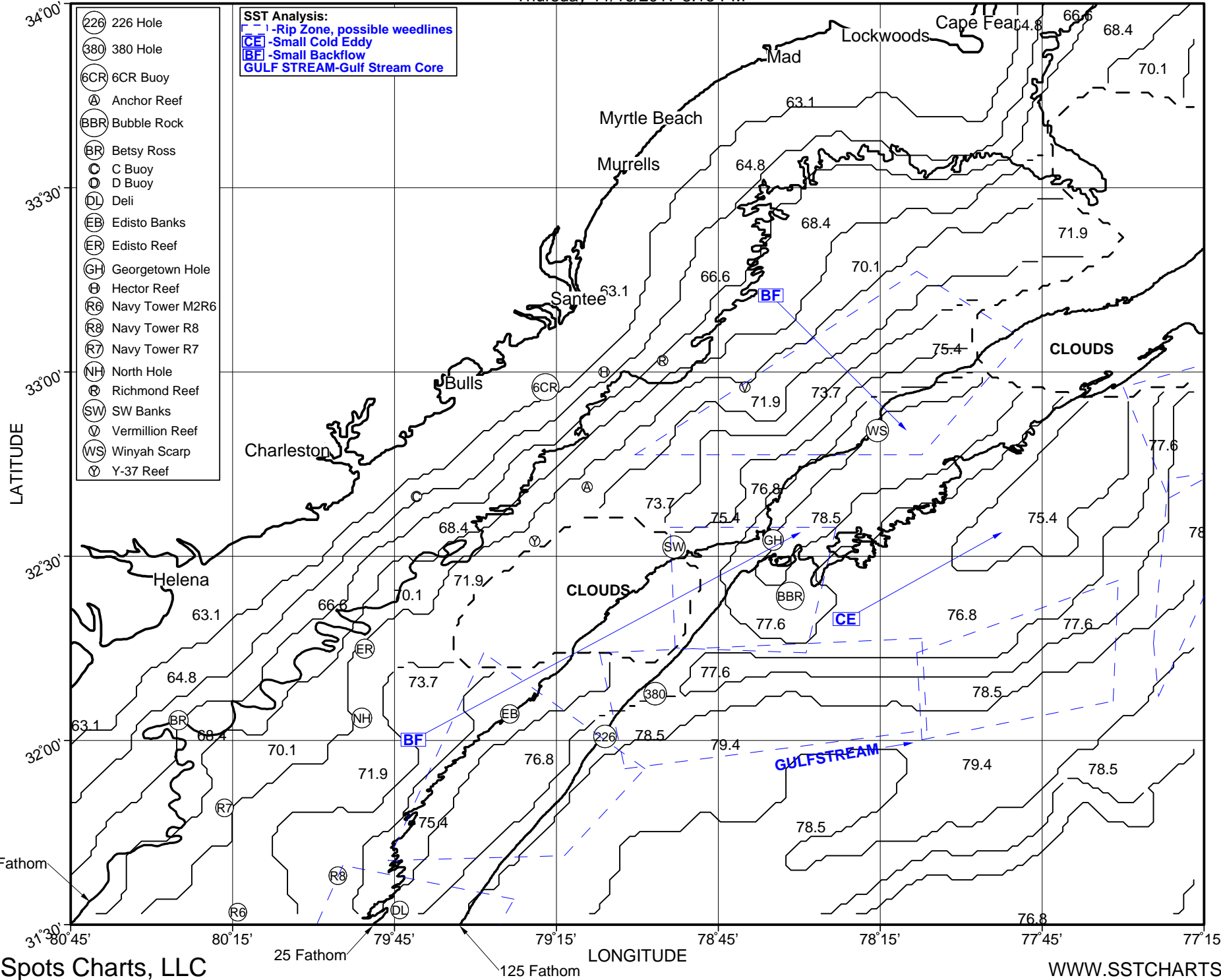


SEA SURFACE TEMPERATURE, SOUTH CAROLINA COAST

Thursday 11/16/2017 8:15 PM

NOT FOR NAVIGATION PURPOSES

WWW.SSTCHARTS.COM



- (226) 226 Hole
- (380) 380 Hole
- (6CR) 6CR Buoy
- (A) Anchor Reef
- (BBR) Bubble Rock
- (BR) Betsy Ross
- (C) C Buoy
- (D) D Buoy
- (DL) Deli
- (EB) Edisto Banks
- (ER) Edisto Reef
- (GH) Georgetown Hole
- (H) Hector Reef
- (R6) Navy Tower M2R6
- (R8) Navy Tower R8
- (R7) Navy Tower R7
- (NH) North Hole
- (R) Richmond Reef
- (SW) SW Banks
- (V) Vermillion Reef
- (WS) Winyah Scarp
- (Y) Y-37 Reef

- SST Analysis:**
- Rip Zone, possible weedlines
 - CE - Small Cold Eddy
 - BF - Small Backflow
 - GULF STREAM - Gulf Stream Core