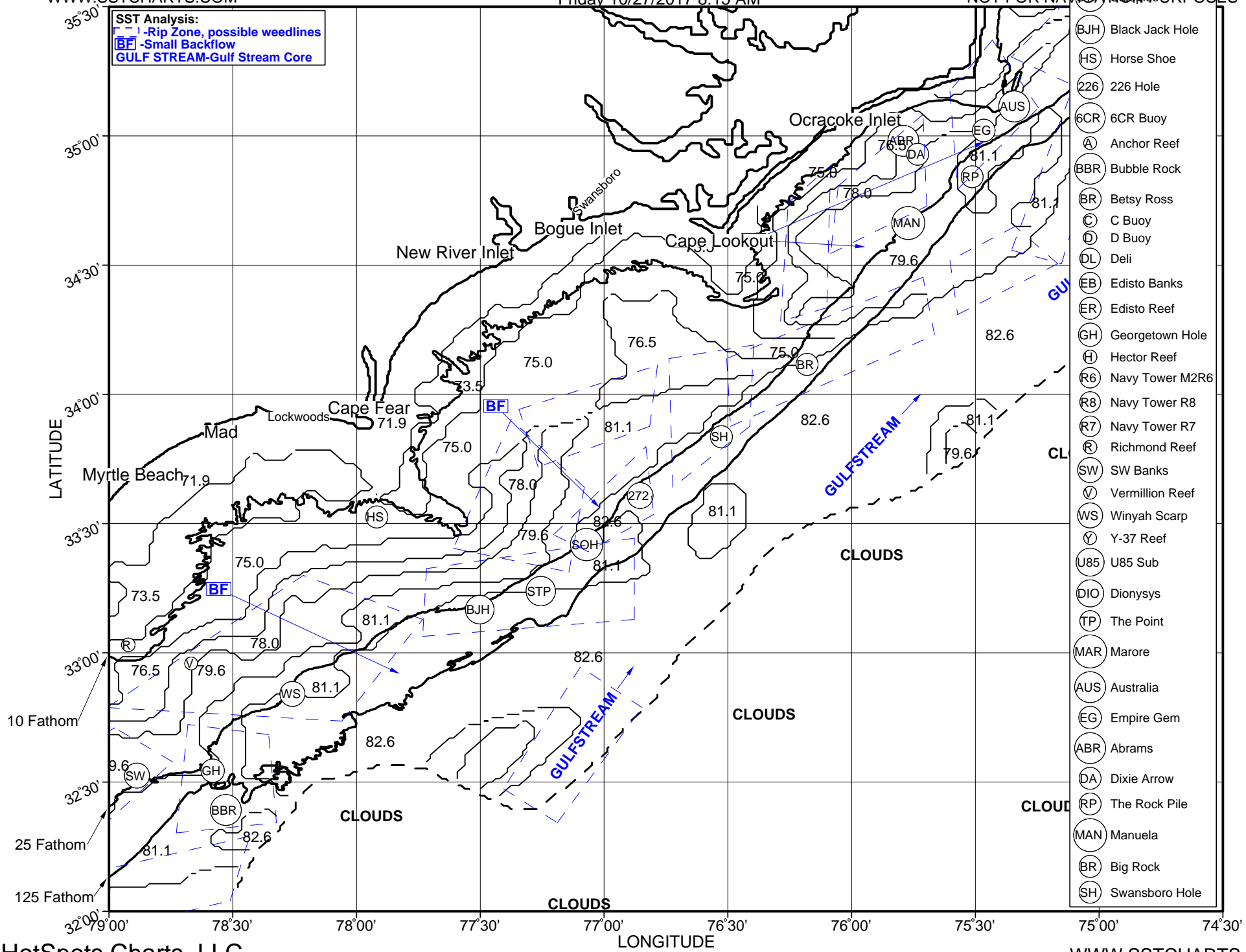


SEA SURFACE TEMPERATURE, NORTH/SOUTH CAROLINA BORDER COAST

Friday 10/27/2017 8:15 AM

NOT FOR NAVIGATION PURPOSES

WWW.SSTCHARTS.COM



- (S) Same Ole Hole
- (272) Ledge 272
- (BJH) Black Jack Hole
- (HS) Horse Shoe
- (226) 226 Hole
- (6CR) 6CR Buoy
- (A) Anchor Reef
- (BBR) Bubble Rock
- (BR) Betsy Ross
- (C) C Buoy
- (D) D Buoy
- (DL) Deli
- (EB) Edisto Banks
- (ER) Edisto Reef
- (GH) Georgetown Hole
- (H) Hector Reef
- (R6) Navy Tower M2R6
- (R8) Navy Tower R8
- (R7) Navy Tower R7
- (R) Richmond Reef
- (SW) SW Banks
- (V) Vermillion Reef
- (WS) Winyah Scarp
- (Y) Y-37 Reef
- (U85) U85 Sub
- (DIO) Dionysys
- (TP) The Point
- (MAR) Marore
- (AUS) Australia
- (EG) Empire Gem
- (ABR) Abrams
- (DA) Dixie Arrow
- (RP) The Rock Pile
- (MAN) Manuela
- (BR) Big Rock
- (SH) Swansboro Hole